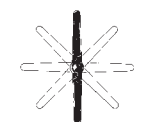




Adjustable T-Handles plastic handle / die-cast handle

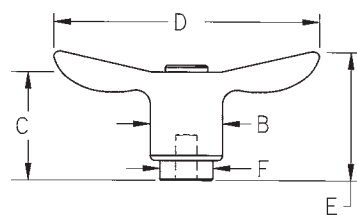


- ▶ Glass fiber reinforced nylon (PA6) with metal insert
- ▶ Zinc die-cast handle
- ▶ Available in black and orange handles
- ▶ All steel parts ensure stability and durability
- ▶ Internal thread with black oxide finish



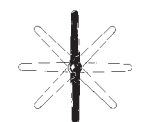
LIFT AND ROTATE
HANDLE 360°

PLASTIC HANDLE		DIE-CAST HANDLE		Thread	Thread Depth	B	C	D	E	F
Black PART #	Orange PART #	Black PART #	Orange PART #							
THP-101	THP-101-OR	TH-101	TH-101-OR	#10-24	.32	.54	.87	1.98	1.05	.39
THP-102	THP-102-OR	TH-102	TH-102-OR	#10-32	.32	.54	.87	1.98	1.05	.39
THP-103	THP-103-OR	TH-103	TH-103-OR	1/4-20	.32	.54	.87	1.98	1.05	.39
THP-104	THP-104-OR	TH-104	TH-104-OR	1/4-20	.40	.70	1.10	2.56	1.31	.53
THP-105	THP-105-OR	TH-105	TH-105-OR	5/16-18	.40	.70	1.10	2.56	1.31	.53
THP-106	THP-106-OR	TH-106	TH-106-OR	5/16-18	.55	.84	1.30	3.07	1.55	.63
THP-107	THP-107-OR	TH-107	TH-107-OR	3/8-16	.55	.84	1.30	3.07	1.55	.63
THP-108	THP-108-OR	TH-108	TH-108-OR	3/8-16	.67	.96	1.52	3.62	1.82	.75
THP-109	THP-109-OR	TH-109	TH-109-OR	1/2-13	.67	.96	1.52	3.62	1.82	.75
-	-	TH-112	TH-112-OR	1/2-13	.90	1.16	1.85	4.25	2.20	.91
-	-	TH-113	TH-113-OR	5/8-11	.90	1.16	1.85	4.25	2.20	.91



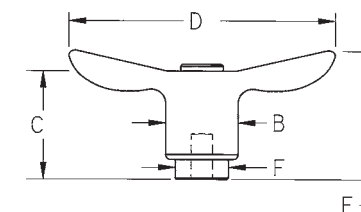
Metric Adjustable T-Handles plastic handle / die-cast handle

- ▶ Glass fiber reinforced nylon (PA6) with metal insert
- ▶ Zinc die-cast handle
- ▶ Available in black and orange handles
- ▶ All steel parts ensure stability and durability
- ▶ Internal thread with black oxide finish



LIFT AND ROTATE
HANDLE 360°

PLASTIC HANDLE		DIE-CAST HANDLE		Thread	Thread Depth	B	C	D	E	F
Black PART #	Orange PART #	Black PART #	Orange PART #							
THP-201	THP-201-OR	TH-201	TH-201-OR	M4 X .7	8mm	13.7mm	22mm	50mm	26.6mm	10mm
THP-202	THP-202-OR	TH-202	TH-202-OR	M5 X .8	8	13.7	22	50	26.6	10
THP-203	THP-203-OR	TH-203	TH-203-OR	M6 X 1.0	8	13.7	22	50	26.6	10
THP-204	THP-204-OR	TH-204	TH-204-OR	M6 X 1.0	10	17.7	28	65	33.4	13.5
THP-205	THP-205-OR	TH-205	TH-205-OR	M8 X 1.25	10	17.7	28	65	33.4	13.5
THP-206	THP-206-OR	TH-206	TH-206-OR	M8 X 1.25	14	21.4	33	78	39.4	16
THP-207	THP-207-OR	TH-207	TH-207-OR	M10 X 1.50	14	21.4	33	78	39.4	16
THP-208	THP-208-OR	TH-208	TH-208-OR	M10 X 1.50	17	24.5	38.7	92	46.2	19
THP-209	THP-209-OR	TH-209	TH-209-OR	M12 X 1.75	17	24.5	38.7	92	46.2	19
-	-	TH-210	TH-210-OR	M12 X 1.75	23	29.4	47	108	55.8	23
-	-	TH-211	TH-211-OR	M16 X 2.0	23	29.4	47	108	55.8	23

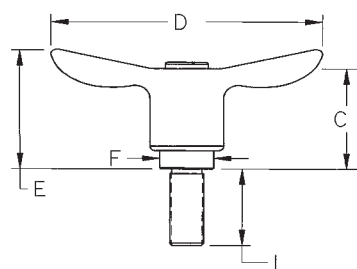


Adjustable T-Handles plastic handle with stud / die-cast handle with stud



LIFT AND ROTATE
HANDLE 360°

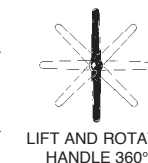
PLASTIC HANDLE		DIE-CAST HANDLE		Thread	Thread Length	B	C	D	E	F
Black PART #	Orange PART #	Black PART #	Orange PART #							
THP-301	THP-301-OR	TH-301	TH-301-OR	#10-24	.63	.54	.87	1.98	1.05	.39
THP-302	THP-302-OR	TH-302	TH-302-OR	#10-32	.63	.54	.87	1.98	1.05	.39
THP-3027	THP-3027-OR	TH-3027	TH-3027-OR	#10-32	1.25	.54	.87	1.98	1.05	.39
THP-303	THP-303-OR	TH-303	TH-303-OR	1/4-20	.78	.54	.87	1.98	1.05	.39
THP-3032	THP-3032-OR	TH-3032	TH-3032-OR	1/4-20	.98	.54	.87	1.98	1.05	.39
THP-3034	THP-3034-OR	TH-3034	TH-3034-OR	1/4-20	1.25	.54	.87	1.98	1.05	.39
THP-3038	THP-3038-OR	TH-3038	TH-3038-OR	1/4-20	1.57	.54	.87	1.98	1.05	.39
THP-3036	THP-3036-OR	TH-3036	TH-3036-OR	1/4-20	1.78	.54	.87	1.98	1.05	.39
THP-3035	THP-3035-OR	TH-3035	TH-3035-OR	1/4-20	.98	.70	1.10	2.56	1.31	.53
THP-3037	THP-3037-OR	TH-3037	TH-3037-OR	5/16-18	.78	.70	1.10	2.56	1.31	.53
THP-3039	THP-3039-OR	TH-3039	TH-3039-OR	5/16-18	1.26	.70	1.10	2.56	1.31	.53
THP-304	THP-304-OR	TH-304	TH-304-OR	5/16-18	1.57	.70	1.10	2.56	1.31	.53
THP-3043	THP-3043-OR	TH-3043	TH-3043-OR	5/16-18	1.97	.70	1.10	2.56	1.31	.53
THP-3045	THP-3045-OR	TH-3045	TH-3045-OR	5/16-18	2.48	.70	1.10	2.56	1.31	.53
THP-3047	THP-3047-OR	TH-3047	TH-3047-OR	3/8-16	.78	.70	1.10	2.56	1.31	.53
THP-3048	THP-3048-OR	TH-3048	TH-3048-OR	3/8-16	1.25	.70	1.10	2.56	1.31	.53
THP-305	THP-305-OR	TH-305	TH-305-OR	3/8-16	1.57	.70	1.10	2.56	1.31	.53
THP-3053	THP-3053-OR	TH-3053	TH-3053-OR	5/16-18	1.97	.84	1.30	3.07	1.55	.63
THP-3056	THP-3056-OR	TH-3056	TH-3056-OR	3/8-16	.98	.84	1.30	3.07	1.55	.63
THP-3058	THP-3058-OR	TH-3058	TH-3058-OR	3/8-16	1.26	.84	1.30	3.07	1.55	.63
THP-306	THP-306-OR	TH-306	TH-306-OR	3/8-16	1.57	.84	1.30	3.07	1.55	.63
THP-307	THP-307-OR	TH-307	TH-307-OR	3/8-16	1.97	.84	1.30	3.07	1.55	.63
THP-3079	THP-3079-OR	TH-3079	TH-3079-OR	3/8-16	2.48	.84	1.30	3.07	1.55	.63
THP-3075	THP-3075-OR	TH-3075	TH-3075-OR	3/8-16	1.57	.96	1.52	3.62	1.82	.75
THP-3078	THP-3078-OR	TH-3078	TH-3078-OR	3/8-16	1.97	.96	1.52	3.62	1.82	.75
THP-308	THP-308-OR	TH-308	TH-308-OR	1/2-13	1.25	.96	1.52	3.62	1.82	.75
THP-3085	THP-3085-OR	TH-3085	TH-3085-OR	1/2-13	1.57	.96	1.52	3.62	1.82	.75
THP-309	THP-309-OR	TH-309	TH-309-OR	1/2-13	1.97	.96	1.52	3.62	1.82	.75
THP-310	THP-310-OR	TH-310	TH-310-OR	1/2-13	2.48	.96	1.52	3.62	1.82	.75
-	-	TH-321	TH-321-OR	1/2-13	1.57	1.16	1.85	4.25	2.20	.91
-	-	TH-322	TH-322-OR	1/2-13	2.48	1.16	1.85	4.25	2.20	.91
-	-	TH-324	TH-324-OR	5/8-11	1.57	1.16	1.85	4.25	2.20	.91
-	-	TH-325	TH-325-OR	5/8-11	2.48	1.16	1.85	4.25	2.20	.91



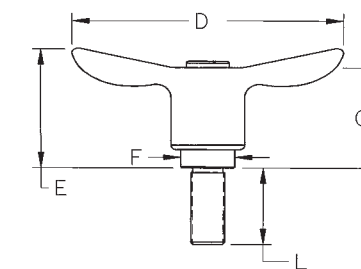
- ▶ Glass fiber reinforced nylon (PA6) with metal insert
- ▶ Zinc die-cast handle
- ▶ Available in black and orange handles
- ▶ All steel parts ensure stability and durability
- ▶ External steel stud with black oxide finish

Metric Adjustable T-Handles plastic handle with stud / die-cast handle with stud

PLASTIC HANDLE		DIE-CAST HANDLE		Thread	Thread Length	B	C	D	E	F
Black PART #	Orange PART #	Black PART #	Orange PART #							
THP-401	THP-401-OR	TH-401	TH-401-OR	M5 x .8	12mm	13.7mm	22mm	50mm	26.6mm	10mm
THP-402	THP-402-OR	TH-402	TH-402-OR	M5 x .8	16	13.7	22	50	26.6	10
THP-403	THP-403-OR	TH-403	TH-403-OR	M5 x .8	20	13.7	22	50	26.6	10
THP-4035	THP-4035-OR	TH-4035	TH-4035-OR	M5 x .8	40	13.7	22	50	26.6	10
THP-404	THP-404-OR	TH-404	TH-404-OR	M6 x 1.0	16	13.7	22	50	26.6	10
THP-405	THP-405-OR	TH-405	TH-405-OR	M6 x 1.0	20	13.7	22	50	26.6	10
THP-406	THP-406-OR	TH-406	TH-406-OR	M6 x 1.0	25	13.7	22	50	26.6	10
THP-407	THP-407-OR	TH-407	TH-407-OR	M6 x 1.0	32	13.7	22	50	26.6	10
THP-408	THP-408-OR	TH-408	TH-408-OR	M6 x 1.0	40	13.7	22	50	26.6	10
THP-409	THP-409-OR	TH-409	TH-409-OR	M8 x 1.25	20	17.7	28	65	33.4	13.5
THP-410	THP-410-OR	TH-410	TH-410-OR	M8 x 1.25	25	17.7	28	65	33.4	13.5
THP-411	THP-411-OR	TH-411	TH-411-OR	M8 x 1.25	32	17.7	28	65	33.4	13.5
THP-412	THP-412-OR	TH-412	TH-412-OR	M8 x 1.25	40	17.7	28	65	33.4	13.5
THP-413	THP-413-OR	TH-413	TH-413-OR	M8 x 1.25	50	17.7	28	65	33.4	13.5
THP-414	THP-414-OR	TH-414	TH-414-OR	M8 x 1.25	63	17.7	28	65	33.4	13.5
THP-415	THP-415-OR	TH-415	TH-415-OR	M10 x 1.50	20	17.7	28	65	33.4	13.5
THP-416	THP-416-OR	TH-416	TH-416-OR	M10 x 1.50	32	17.7	28	65	33.4	13.5
THP-417	THP-417-OR	TH-417	TH-417-OR	M10 x 1.50	40	17.7	28	65	33.4	13.5
THP-418	THP-418-OR	TH-418	TH-418-OR	M10 x 1.50	50	17.7	28	65	33.4	13.5
THP-419	THP-419-OR	TH-419	TH-419-OR	M10 x 1.50	20	21.4	33	78	39.4	16
THP-4195	THP-4195-OR	TH-4195	TH-4195-OR	M10 x 1.50	25	21.4	33	78	39.4	16
THP-420	THP-420-OR	TH-420	TH-420-OR	M10 x 1.50	32	21.4	33	78	39.4	16
THP-421	THP-421-OR	TH-421	TH-421-OR	M10 x 1.50	40	21.4	33	78	39.4	16
THP-422	THP-422-OR	TH-422	TH-422-OR	M10 x 1.50	50	21.4	33	78	39.4	16
THP-423	THP-423-OR	TH-423	TH-423-OR	M10 x 1.50	63	21.4	33	78	39.4	16
-	-	TH-4233	TH-4233-OR	M10 x 1.50	32	24.5	38.7	92	46.2	19
-	-	TH-4234	TH-4234-OR	M10 x 1.50	40	24.5	38.7	92	46.2	19
-	-	TH-4235	TH-4235-OR	M10 x 1.50	50	24.5	38.7	92	46.2	19
-	-	TH-4236	TH-4236-OR	M10 x 1.50	63	24.5	38.7	92	46.2	19
THP-424	THP-424-OR	TH-424	TH-424-OR	M12 x 1.75	32	24.5	38.7	92	46.2	19
THP-425	THP-425-OR	TH-425	TH-425-OR	M12 x 1.75	40	24.5	38.7	92	46.2	19
THP-426	THP-426-OR	TH-426	TH-426-OR	M12 x 1.75	50	24.5	38.7	92	46.2	19
THP-427	THP-427-OR	TH-427	TH-427-OR	M12 x 1.75	63	24.5	38.7	92	46.2	19
-	-	TH-4275	TH-4275-OR	M12 x 1.75	40	29.4	47	108	55.8	23
-	-	TH-428	TH-428-OR	M12 x 1.75	63	29.4	47	108	55.8	23



LIFT AND ROTATE
HANDLE 360°



- ▶ Glass fiber reinforced nylon (PA6) with metal insert
- ▶ Zinc die-cast handle
- ▶ Available in black and orange handles
- ▶ All steel parts ensure stability and durability
- ▶ External steel stud with black oxide finish

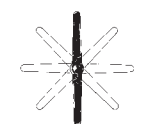


Adjustable T-Handles

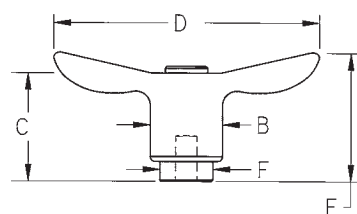
stainless steel components
plastic handle / die-cast handle



- ▶ Glass fiber reinforced nylon (PA6) with metal insert
- ▶ Zinc die-cast handle
- ▶ Available in black and orange handles
- ▶ All stainless steel components
- ▶ Internal stainless steel thread



LIFT AND ROTATE
HANDLE 360°



PLASTIC HANDLE		DIE-CAST HANDLE		Thread	Thread Depth	B	C	D	E	F
Black PART #	Orange PART #	Black PART #	Orange PART #							
THP-101SS	THP-101SS-OR	TH-101SS	TH-101SS-OR	#10-24	.32	.54	.87	1.98	1.05	.39
THP-102SS	THP-102SS-OR	TH-102SS	TH-102SS-OR	#10-32	.32	.54	.87	1.98	1.05	.39
THP-103SS	THP-103SS-OR	TH-103SS	TH-103SS-OR	1/4-20	.32	.54	.87	1.98	1.05	.39
THP-104SS	THP-104SS-OR	TH-104SS	TH-104SS-OR	1/4-20	.40	.70	1.10	2.56	1.31	.53
THP-105SS	THP-105SS-OR	TH-105SS	TH-105SS-OR	5/16-18	.40	.70	1.10	2.56	1.31	.53
THP-106SS	THP-106SS-OR	TH-106SS	TH-106SS-OR	5/16-18	.55	.84	1.30	3.07	1.55	.63
THP-107SS	THP-107SS-OR	TH-107SS	TH-107SS-OR	3/8-16	.55	.84	1.30	3.07	1.55	.63
THP-108SS	THP-108SS-OR	TH-108SS	TH-108SS-OR	3/8-16	.67	.96	1.52	3.62	1.82	.75
THP-109SS	THP-109SS-OR	TH-109SS	TH-109SS-OR	1/2-13	.67	.96	1.52	3.62	1.82	.75

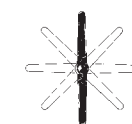


Metric Adjustable T-Handles

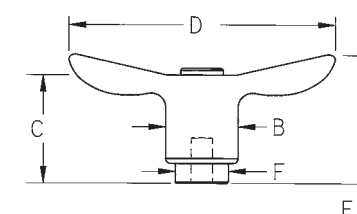
stainless steel components
plastic handle / die-cast handle



- ▶ Glass fiber reinforced nylon (PA6) with metal insert
- ▶ Zinc die-cast handle
- ▶ Available in black and orange handles
- ▶ All stainless steel components
- ▶ Internal stainless steel thread



LIFT AND ROTATE
HANDLE 360°



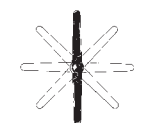
PLASTIC HANDLE		DIE-CAST HANDLE		Thread	Thread Depth	B	C	D	E	F
Black PART #	Orange PART #	Black PART #	Orange PART #							
THP-202SS	THP-202SS-OR	TH-202SS	TH-202SS-OR	M5 X .8	8mm	13.7mm	22mm	50mm	26.6mm	10mm
THP-203SS	THP-203SS-OR	TH-203SS	TH-203SS-OR	M6 X 1.0	8	13.7	22	50	26.6	10
THP-205SS	THP-205SS-OR	TH-205SS	TH-205SS-OR	M8 X 1.25	10	17.7	28	65	33.4	13.5
THP-207SS	THP-207SS-OR	TH-207SS	TH-207SS-OR	M10 X 1.50	14	21.4	33	78	39.4	16
THP-208SS	THP-208SS-OR	TH-208SS	TH-208SS-OR	M10 X 1.50	17	24.5	38.7	92	46.2	19
THP-209SS	THP-209SS-OR	TH-209SS	TH-209SS-OR	M12 X 1.75	17	24.5	38.7	92	46.2	19

Adjustable T-Handles

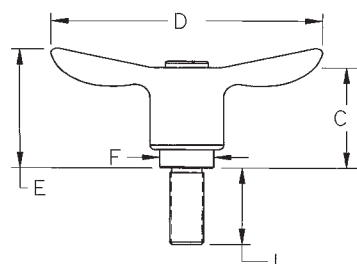
stainless steel components
plastic handle with stud / die-cast handle with stud



- ▶ Glass fiber reinforced nylon (PA6) with metal insert
- ▶ Zinc die-cast handle
- ▶ Available in black and orange handles
- ▶ All stainless steel components
- ▶ External stainless steel stud

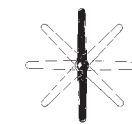


LIFT AND ROTATE
HANDLE 360°

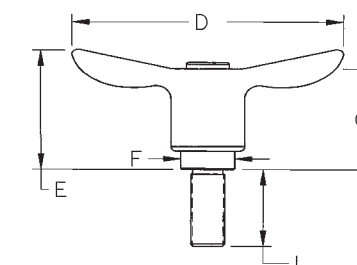


PLASTIC HANDLE		DIE-CAST HANDLE		Thread	Thread Length	B	C	D	E	F
Black PART #	Orange PART #	Black PART #	Orange PART #							
THP-301SS	THP-301SS-OR	TH-301SS	TH-301SS-OR	#10-24	.63	.54	.87	1.98	1.05	.39
THP-302SS	THP-302SS-OR	TH-302SS	TH-302SS-OR	#10-32	.63	.54	.87	1.98	1.05	.39
THP-3027SS	THP-3027SS-OR	TH-3027SS	TH-3027SS-OR	#10-32	1.25	.54	.87	1.98	1.05	.39
THP-303SS	THP-303SS-OR	TH-303SS	TH-303SS-OR	1/4-20	.78	.54	.87	1.98	1.05	.39
THP-3032SS	THP-3032SS-OR	TH-3032SS	TH-3032SS-OR	1/4-20	.98	.54	.87	1.98	1.05	.39
THP-3034SS	THP-3034SS-OR	TH-3034SS	TH-3034SS-OR	1/4-20	1.25	.54	.87	1.98	1.05	.39
THP-3038SS	THP-3038SS-OR	TH-3038SS	TH-3038SS-OR	1/4-20	1.57	.54	.87	1.98	1.05	.39
THP-3036SS	THP-3036SS-OR	TH-3036SS	TH-3036SS-OR	1/4-20	1.78	.54	.87	1.98	1.05	.39
THP-3035SS	THP-3035SS-OR	TH-3035SS	TH-3035SS-OR	1/4-20	.98	.70	1.10	2.56	1.31	.53
THP-3037SS	THP-3037SS-OR	TH-3037SS	TH-3037SS-OR	5/16-18	.78	.70	1.10	2.56	1.31	.53
THP-304SS	THP-304SS-OR	TH-304SS	TH-304SS-OR	5/16-18	1.57	.70	1.10	2.56	1.31	.53
THP-3043SS	THP-3043SS-OR	TH-3043SS	TH-3043SS-OR	5/16-18	1.97	.70	1.10	2.56	1.31	.53
THP-3045SS	THP-3045SS-OR	TH-3045SS	TH-3045SS-OR	5/16-18	2.48	.70	1.10	2.56	1.31	.53
THP-3047SS	THP-3047SS-OR	TH-3047SS	TH-3047SS-OR	3/8-16	.78	.70	1.10	2.56	1.31	.53
THP-3048SS	THP-3048SS-OR	TH-3048SS	TH-3048SS-OR	3/8-16	1.25	.70	1.10	2.56	1.31	.53
THP-305SS	THP-305SS-OR	TH-305SS	TH-305SS-OR	3/8-16	1.57	.70	1.10	2.56	1.31	.53
THP-3053SS	THP-3053SS-OR	TH-3053SS	TH-3053SS-OR	5/16-18	1.97	.84	1.30	3.07	1.55	.63
THP-306SS	THP-306SS-OR	TH-306SS	TH-306SS-OR	3/8-16	1.57	.84	1.30	3.07	1.55	.63
THP-307SS	THP-307SS-OR	TH-307SS	TH-307SS-OR	3/8-16	1.97	.84	1.30	3.07	1.55	.63
THP-3075SS	THP-3075SS-OR	TH-3075SS	TH-3075SS-OR	3/8-16	1.57	.96	1.52	3.62	1.82	.75
THP-3078SS	THP-3078SS-OR	TH-3078SS	TH-3078SS-OR	3/8-16	1.97	.96	1.52	3.62	1.82	.75
THP-308SS	THP-308SS-OR	TH-308SS	TH-308SS-OR	1/2-13	1.25	.96	1.52	3.62	1.82	.75
THP-3085SS	THP-3085SS-OR	TH-3085SS	TH-3085SS-OR	1/2-13	1.57	.96	1.52	3.62	1.82	.75
THP-309SS	THP-309SS-OR	TH-309SS	TH-309SS-OR	1/2-13	1.97	.96	1.52	3.62	1.82	.75

- ▶ Glass fiber reinforced nylon (PA6) with metal insert
- ▶ Zinc die-cast handle
- ▶ Available in black and orange handles
- ▶ All stainless steel components
- ▶ External stainless steel stud



LIFT AND ROTATE
HANDLE 360°



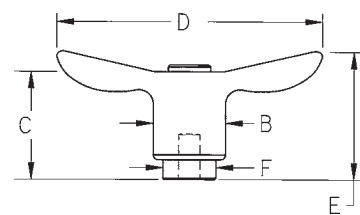
PLASTIC HANDLE		DIE-CAST HANDLE		Thread	Thread Length	B	C	D	E	F
Black PART #	Orange PART #	Black PART #	Orange PART #							
THP-402SS	THP-402SS-OR	TH-402SS	TH-402SS-OR	M5 x .8	16mm	13.7mm	22mm	50mm	26.6mm	10mm
THP-403SS	THP-403SS-OR	TH-403SS	TH-403SS-OR	M5 x .8	20	13.7	22	50	26.6	10
THP-4035SS	THP-4035SS-OR	TH-4035SS	TH-4035SS-OR	M5 x .8	40	13.7	22	50	26.6	10
THP-405SS	THP-405SS-OR	TH-405SS	TH-405SS-OR	M6 x 1.0	20	13.7	22	50	26.6	10
THP-406SS	THP-406SS-OR	TH-406SS	TH-406SS-OR	M6 x 1.0	25	13.7	22	50	26.6	10
THP-407SS	THP-407SS-OR	TH-407SS	TH-407SS-OR	M6 x 1.0	32	13.7	22	50	26.6	10
THP-408SS	THP-408SS-OR	TH-408SS	TH-408SS-OR	M6 x 1.0	40	13.7	22	50	26.6	10
THP-409SS	THP-409SS-OR	TH-409SS	TH-409SS-OR	M8 x 1.25	20	17.7	28	65	33.4	13.5
THP-410SS	THP-410SS-OR	TH-410SS	TH-410SS-OR	M8 x 1.25	25	17.7	28	65	33.4	13.5
THP-411SS	THP-411SS-OR	TH-411SS	TH-411SS-OR	M8 x 1.25	32	17.7	28	65	33.4	13.5
THP-412SS	THP-412SS-OR	TH-412SS	TH-412SS-OR	M8 x 1.25	40	17.7	28	65	33.4	13.5
THP-413SS	THP-413SS-OR	TH-413SS	TH-413SS-OR	M8 x 1.25	50	17.7	28	65	33.4	13.5
THP-414SS	THP-414SS-OR	TH-414SS	TH-414SS-OR	M8 x 1.25	63	17.7	28	65	33.4	13.5
THP-4195SS	THP-4195SS-OR	TH-4195SS	TH-4195SS-OR	M10 x 1.50	25	21.4	33	78	39.4	16
THP-420SS	THP-420SS-OR	TH-420SS	TH-420SS-OR	M10 x 1.50	32	21.4	33	78	39.4	16
THP-421SS	THP-421SS-OR	TH-421SS	TH-421SS-OR	M10 x 1.50	40	21.4	33	78	39.4	16
THP-422SS	THP-422SS-OR	TH-422SS	TH-422SS-OR	M10 x 1.50	50	21.4	33	78	39.4	16
THP-4236SS	THP-4236SS-OR	TH-4236SS	TH-4236SS-OR	M10 x 1.50	63	24.5	38.7	92	46.2	19
THP-424SS	THP-424SS-OR	TH-424SS	TH-424SS-OR	M12 x 1.75	32	24.5	38.7	92	46.2	19
THP-425SS	THP-425SS-OR	TH-425SS	TH-425SS-OR	M12 x 1.75	40	24.5	38.7	92	46.2	19
THP-426SS	THP-426SS-OR	TH-426SS	TH-426SS-OR	M12 x 1.75	50	24.5	38.7	92	46.2	19

Stainless Steel Adjustable T-Handles

stainless steel components



- ▶ Stainless steel handle (304)
- ▶ All stainless steel components
- ▶ Internal stainless steel thread (303)



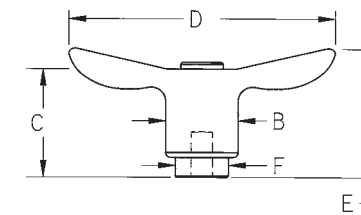
Stainless Steel Handle PART #	Thread	Thread Depth	B	C	D	E	F
STH-101SS	#10-24	.32	.54	.87	1.98	1.05	.39
STH-102SS	#10-32	.32	.54	.87	1.98	1.05	.39
STH-103SS	1/4-20	.32	.54	.87	1.98	1.05	.39
STH-104SS	1/4-20	.40	.70	1.10	2.56	1.31	.53
STH-105SS	5/16-18	.40	.70	1.10	2.56	1.31	.53
STH-106SS	5/16-18	.55	.84	1.30	3.07	1.55	.63
STH-107SS	3/8-16	.55	.84	1.30	3.07	1.55	.63
STH-108SS	3/8-16	.67	.96	1.52	3.62	1.82	.75
STH-109SS	1/2-13	.67	.96	1.52	3.62	1.82	.75

Stainless Steel Metric Adjustable T-Handles

stainless steel components



- ▶ Stainless steel handle (304)
- ▶ All stainless steel components
- ▶ Internal stainless steel thread (303)



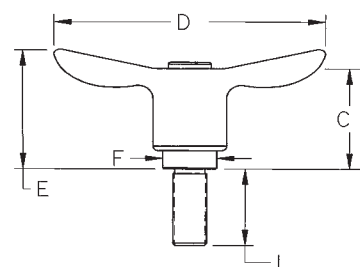
Stainless Steel Handle PART #	Thread	Thread Depth	B	C	D	E	F
STH-202SS	M5 X .8	8mm	13.7mm	22mm	50mm	26.6mm	10mm
STH-203SS	M6 X 1.0	8	13.7	22	50	26.6	10
STH-204SS	M6 X 1.0	10	17.7	28	65	33.4	13.5
STH-205SS	M8 X 1.25	10	17.7	28	65	33.4	13.5
STH-206SS	M8 X 1.25	14	21.4	33	78	39.4	16
STH-207SS	M10 X 1.50	14	21.4	33	78	39.4	16
STH-208SS	M10 X 1.50	17	24.5	38.7	92	46.2	19
STH-209SS	M12 X 1.75	17	24.5	38.7	92	46.2	19

Stainless Steel Adjustable T-Handles

stainless steel components with stud



- ▶ Stainless steel handle (304)
- ▶ All stainless steel components
- ▶ Stainless steel stud (303)



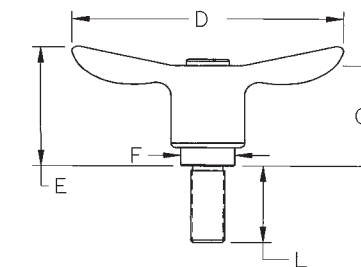
Stainless Steel Handle PART #	Thread	Thread Length	B	C	D	E	F
STH-301SS	#10-24	.63	.54	.87	1.98	1.05	.39
STH-302SS	#10-32	.63	.54	.87	1.98	1.05	.39
STH-3027SS	#10-32	1.25	.54	.87	1.98	1.05	.39
STH-303SS	1/4-20	.78	.54	.87	1.98	1.05	.39
STH-3032SS	1/4-20	.98	.54	.87	1.98	1.05	.39
STH-3034SS	1/4-20	1.25	.54	.87	1.98	1.05	.39
STH-3038SS	1/4-20	1.57	.54	.87	1.98	1.05	.39
STH-3036SS	1/4-20	1.78	.54	.87	1.98	1.05	.39
STH-3037SS	5/16-18	.78	.70	1.10	2.56	1.31	.53
STH-304SS	5/16-18	1.57	.70	1.10	2.56	1.31	.53
STH-3043SS	5/16-18	1.97	.70	1.10	2.56	1.31	.53
STH-3045SS	5/16-18	2.48	.70	1.10	2.56	1.31	.53
STH-3047SS	3/8-16	.78	.70	1.10	2.56	1.31	.53
STH-3048SS	3/8-16	1.25	.70	1.10	2.56	1.31	.53
STH-305SS	3/8-16	1.57	.70	1.10	2.56	1.31	.53
STH-306SS	3/8-16	1.57	.84	1.30	3.07	1.55	.63
STH-307SS	3/8-16	1.97	.84	1.30	3.07	1.55	.63
STH-308SS	1/2-13	1.25	.96	1.52	3.62	1.82	.75
STH-3085SS	1/2-13	1.57	.96	1.52	3.62	1.82	.75
STH-309SS	1/2-13	1.97	.96	1.52	3.62	1.82	.75

Stainless Steel Metric Adjustable T-Handles

stainless steel components with stud



- ▶ Stainless steel handle (304)
- ▶ All stainless steel components
- ▶ Stainless steel stud (303)



Stainless Steel Handle PART #	Thread	Thread Length	B	C	D	E	F
STH-401SS	M5 x .8	12mm	13.7mm	22mm	50mm	26.6mm	10mm
STH-402SS	M5 x .8	16	13.7	22	50	26.6	10
STH-403SS	M5 x .8	20	13.7	22	50	26.6	10
STH-4035SS	M5 x .8	40	13.7	22	50	26.6	10
STH-404SS	M6 x 1.0	16	13.7	22	50	26.6	10
STH-405SS	M6 x 1.0	20	13.7	22	50	26.6	10
STH-406SS	M6 x 1.0	25	13.7	22	50	26.6	10
STH-407SS	M6 x 1.0	32	13.7	22	50	26.6	10
STH-408SS	M6 x 1.0	40	13.7	22	50	26.6	10
STH-409SS	M8 x 1.25	20	17.7	28	65	33.4	13.5
STH-410SS	M8 x 1.25	25	17.7	28	65	33.4	13.5
STH-411SS	M8 x 1.25	32	17.7	28	65	33.4	13.5
STH-412SS	M8 x 1.25	40	17.7	28	65	33.4	13.5
STH-413SS	M8 x 1.25	50	17.7	28	65	33.4	13.5
STH-414SS	M8 x 1.25	63	17.7	28	65	33.4	13.5
STH-4195SS	M10 x 1.50	25	21.4	33	78	39.4	16
STH-420SS	M10 x 1.50	32	21.4	33	78	39.4	16
STH-421SS	M10 x 1.50	40	21.4	33	78	39.4	16
STH-422SS	M10 x 1.50	50	21.4	33	78	39.4	16
STH-424SS	M12 x 1.75	32	24.5	38.7	92	46.2	19
STH-425SS	M12 x 1.75	40	24.5	38.7	92	46.2	19
STH-426SS	M12 x 1.75	50	24.5	38.7	92	46.2	19